

# University Survey of Student Assessment of Teaching



## Course Evaluation Report

INSTRUCTOR: **Jonathan W Rose**

DEPARTMENT: **POLS**

COURSE: **POLS-419**



SECTION: -

YEAR: **2007**

TERM: **W**

Number of students in course or section: 19  
 Number of returned evaluations: 17

Respondents for whom this is a required course: 10  
 Percentage of enrolled students responding: 89%

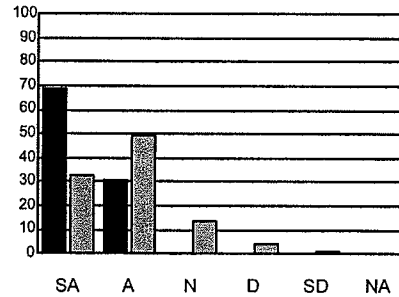
LEGEND: Individual course results are reported thus:   
 Departmental results are represented thus:   
 SA = Strongly Agree, A = Agree, N = Neutral, D = Disagree, SD = Strongly Disagree, NA = Not Applicable

- NOTES:
1. Departmental means and percentages have been calculated as the average of the individual course means and percentages (rather than from the individual responses for the department which would result in large classes unduly influencing the results).
  2. If the number of returns is less than 10, the responses are not aggregated into the departmental mean.
  3. The histogram bar represents the percentage of students rating each item.
  4. The numbers quoted are actual numbers of respondents.
  5. For response rates of less than 65% the results may not be representative of student opinion and should be interpreted with caution.
  6. The accuracy of the scanned data depends upon the legibility of the response marks. In some circumstances a small percentage of responses may be undetected by the scanner.

### 1. Overall, this is an excellent course.

Mean for this course: 4.7  
 Standard deviation: 0.46  
 Departmental mean: 4.1  
 Lowest mean for a course in this department: 3.2  
 Highest mean for a course in this department: 4.7

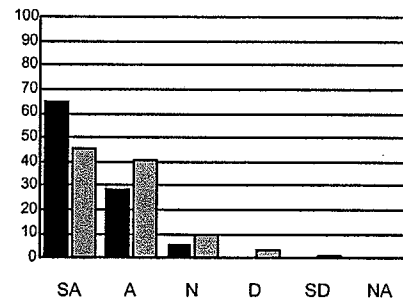
	SA	A	N	D	SD	NA
Number of respondents	11	5	0	0	0	0



### 2. Overall, this instructor is an effective teacher.

Mean for this course: 4.6  
 Standard deviation: 0.60  
 Departmental mean: 4.3  
 Lowest mean for a course in this department: 3.6  
 Highest mean for a course in this department: 4.9

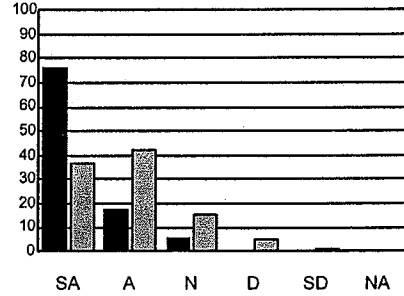
	SA	A	N	D	SD	NA
Number of respondents	11	5	1	0	0	0



**3. I learned a great deal from this course.**

Mean for this course: 4.7  
 Standard deviation: 0.57  
 Departmental mean: 4.1  
 Lowest mean for a course in this department: 3.2  
 Highest mean for a course in this department: 4.7

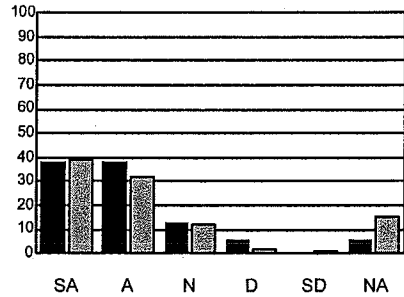
	SA	A	N	D	SD	NA
Number of respondents	13	3	1	0	0	0



**4. The instructor showed sensitivity to the needs and interests of students from diverse groups.**

Mean for this course: 4.1  
 Standard deviation: 0.88  
 Departmental mean: 4.2  
 Lowest mean for a course in this department: 3.4  
 Highest mean for a course in this department: 4.9

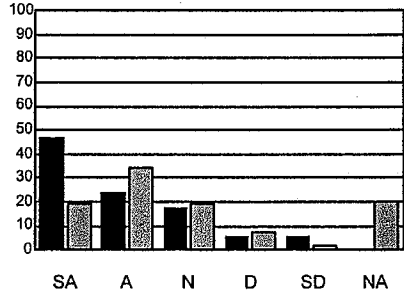
	SA	A	N	D	SD	NA
Number of respondents	6	6	2	1	0	1



**5. Grading was a fair assessment of my performance in this course.**

Mean for this course: 4.0  
 Standard deviation: 1.19  
 Departmental mean: 3.8  
 Lowest mean for a course in this department: 3.0  
 Highest mean for a course in this department: 4.6

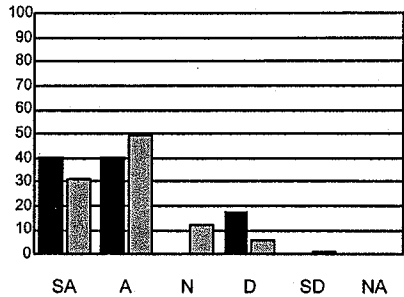
	SA	A	N	D	SD	NA
Number of respondents	8	4	3	1	1	0



**6. The workload in this course was reasonable and appropriate.**

Mean for this course: 4.1  
 Standard deviation: 1.06  
 Departmental mean: 4.1  
 Lowest mean for a course in this department: 3.3  
 Highest mean for a course in this department: 4.5

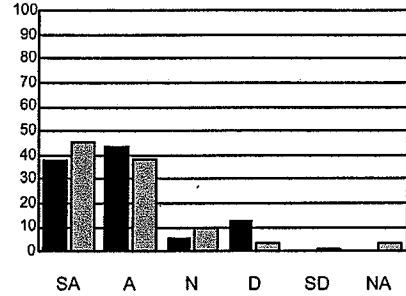
	SA	A	N	D	SD	NA
Number of respondents	7	7	0	3	0	0



**7. The instructor in this course showed a genuine concern for students.**

Mean for this course: 4.1  
 Standard deviation: 0.97  
 Departmental mean: 4.3  
 Lowest mean for a course in this department: 3.6  
 Highest mean for a course in this department: 4.9

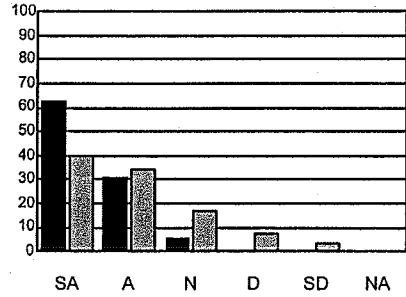
	SA	A	N	D	SD	NA
Number of respondents	6	7	1	2	0	0



**8. My interest in the subject has been stimulated by this course.**

Mean for this course: 4.6  
 Standard deviation: 0.61  
 Departmental mean: 4.0  
 Lowest mean for a course in this department: 2.7  
 Highest mean for a course in this department: 4.8

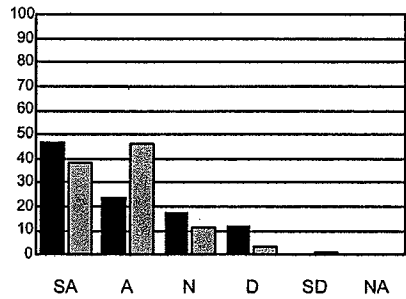
	SA	A	N	D	SD	NA
Number of respondents	10	5	1	0	0	0



**9. The course was well organized.**

Mean for this course: 4.1  
 Standard deviation: 1.06  
 Departmental mean: 4.2  
 Lowest mean for a course in this department: 3.1  
 Highest mean for a course in this department: 4.7

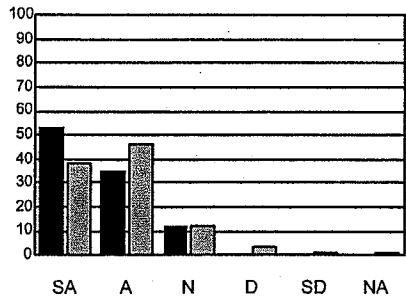
	SA	A	N	D	SD	NA
Number of respondents	8	4	3	2	0	0



**10. The instructor presented material clearly.**

Mean for this course: 4.4  
 Standard deviation: 0.69  
 Departmental mean: 4.2  
 Lowest mean for a course in this department: 3.4  
 Highest mean for a course in this department: 4.9

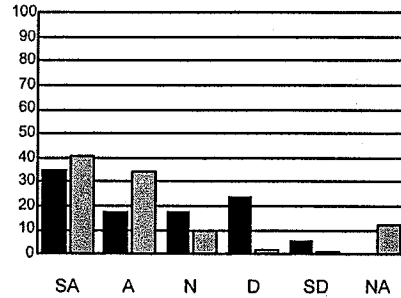
	SA	A	N	D	SD	NA
Number of respondents	9	6	2	0	0	0



**11. The instructor was available for discussion outside class.**

Mean for this course: 3.5  
 Standard deviation: 1.33  
 Departmental mean: 4.3  
 Lowest mean for a course in this department: 3.5  
 Highest mean for a course in this department: 4.9

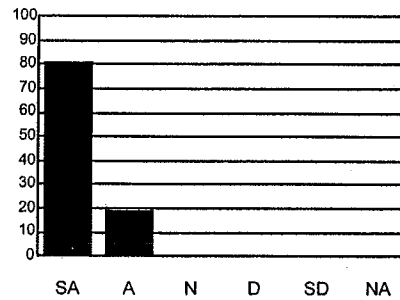
	SA	A	N	D	SD	NA
Number of respondents	6	3	3	4	1	0



**12. The instructor encouraged students to express their opinions.**

Mean for this course: 4.8  
 Standard deviation: 0.39

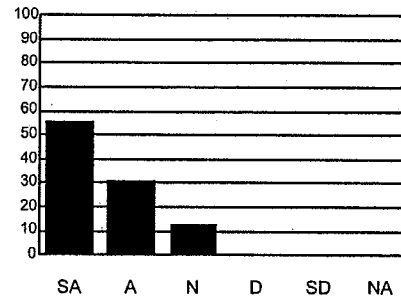
	SA	A	N	D	SD	NA
Number of respondents	13	3	0	0	0	0



**13. The instructor seemed aware of student needs.**

Mean for this course: 4.4  
 Standard deviation: 0.70

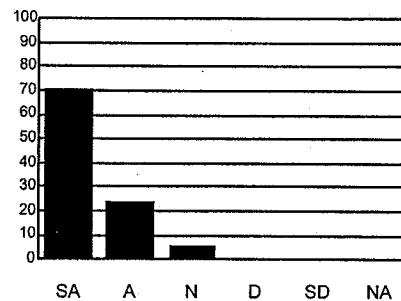
	SA	A	N	D	SD	NA
Number of respondents	9	5	2	0	0	0



**14. The instructor used student questions as a way of discovering points of confusion or misunderstanding.**

Mean for this course: 4.6  
 Standard deviation: 0.59

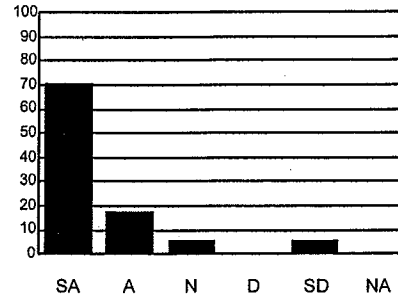
	SA	A	N	D	SD	NA
Number of respondents	12	4	1	0	0	0



**15. The instructor created a positive class environment.**

Mean for this course: 4.5  
Standard deviation: 1.04

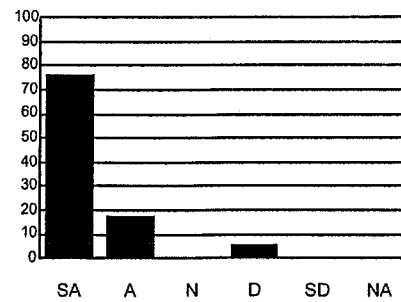
	SA	A	N	D	SD	NA
Number of respondents	12	3	1	0	1	0



**16. The instructor was prepared for class.**

Mean for this course: 4.6  
Standard deviation: 0.76

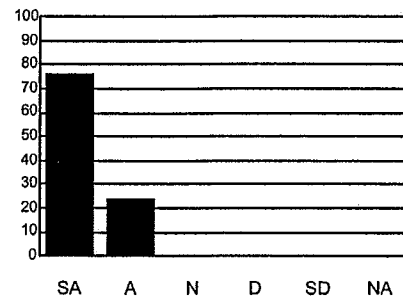
	SA	A	N	D	SD	NA
Number of respondents	13	3	0	1	0	0



**17. The instructor was able to hold my attention in this course.**

Mean for this course: 4.8  
Standard deviation: 0.42

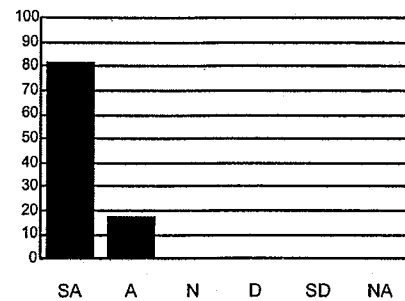
	SA	A	N	D	SD	NA
Number of respondents	13	4	0	0	0	0



**18. The instructor was enthusiastic in presenting course material.**

Mean for this course: 4.8  
Standard deviation: 0.38

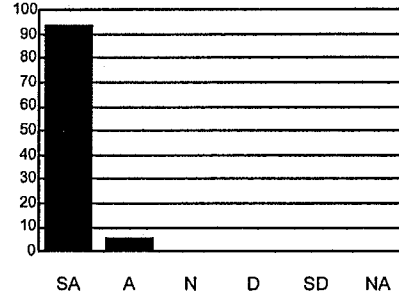
	SA	A	N	D	SD	NA
Number of respondents	14	3	0	0	0	0



**19. The instructor seemed genuinely interested in the course material.**

Mean for this course: 4.9  
 Standard deviation: 0.24

	SA	A	N	D	SD	NA
Number of respondents	16	1	0	0	0	0



**20. The instructor's presentations were generally thought-provoking.**

Mean for this course: 4.7  
 Standard deviation: 0.46

	SA	A	N	D	SD	NA
Number of respondents	12	5	0	0	0	0

