

# University Survey of Student Assessment of Teaching



## Course Evaluation Report

INSTRUCTOR: **Jonathan W Rose**



DEPARTMENT: **POLS**

COURSE: **POLS-393** SECTION: **-**

YEAR: **2010** TERM: **W**

Number of students in course or section: 73  
 Number of returned evaluations: 45

Respondents for whom this is a required course: 8  
 Percentage of enrolled students responding: 62%

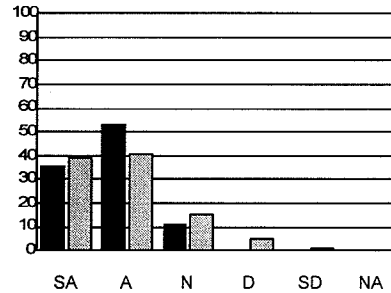
LEGEND: Individual course results are reported thus:   
 Departmental results are represented thus:   
 SA = Strongly Agree, A = Agree, N = Neutral, D = Disagree, SD = Strongly Disagree, NA = Not Applicable

- NOTES:
1. Departmental means and percentages have been calculated as the average of the individual course means and percentages (rather than from the individual responses for the department which would result in large classes unduly influencing the results).
  2. If the number of returns is less than 10, the responses are not aggregated into the departmental mean.
  3. The histogram bar represents the percentage of students rating each item.
  4. The numbers quoted are actual numbers of respondents.
  5. For response rates of less than 65% the results may not be representative of student opinion and should be interpreted with caution.
  6. The accuracy of the scanned data depends upon the legibility of the response marks. In some circumstances a small percentage of responses may be undetected by the scanner.

### 1. Overall, this is an excellent course.

Mean for this course: 4.2  
 Standard deviation: 0.64  
 Departmental mean: 4.1  
 Lowest mean for a course in this department: 3.3  
 Highest mean for a course in this department: 4.8

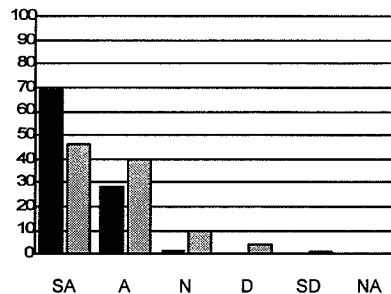
	SA	A	N	D	SD	NA
Number of respondents	16	24	5	0	0	0



### 2. Overall, this instructor is an effective teacher.

Mean for this course: 4.7  
 Standard deviation: 0.52  
 Departmental mean: 4.3  
 Lowest mean for a course in this department: 3.4  
 Highest mean for a course in this department: 4.8

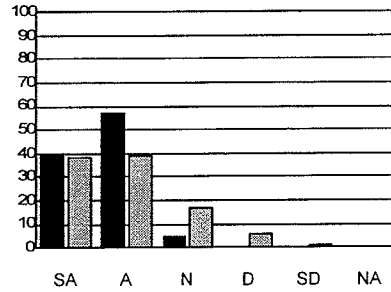
	SA	A	N	D	SD	NA
Number of respondents	31	13	1	0	0	0



**3. I learned a great deal from this course.**

Mean for this course: 4.3  
 Standard deviation: 0.56  
 Departmental mean: 4.1  
 Lowest mean for a course in this department: 3.4  
 Highest mean for a course in this department: 4.8

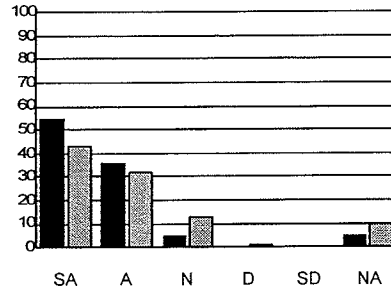
	SA	A	N	D	SD	NA
Number of respondents	17	25	2	0	0	0



**4. The instructor showed sensitivity to the needs and interests of students from diverse groups.**

Mean for this course: 4.5  
 Standard deviation: 0.59  
 Departmental mean: 4.3  
 Lowest mean for a course in this department: 3.7  
 Highest mean for a course in this department: 4.8

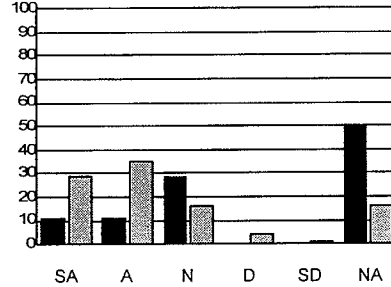
	SA	A	N	D	SD	NA
Number of respondents	24	16	2	0	0	2



**5. Grading was a fair assessment of my performance in this course.**

Mean for this course: 3.7  
 Standard deviation: 0.81  
 Departmental mean: 4.1  
 Lowest mean for a course in this department: 3.4  
 Highest mean for a course in this department: 4.8

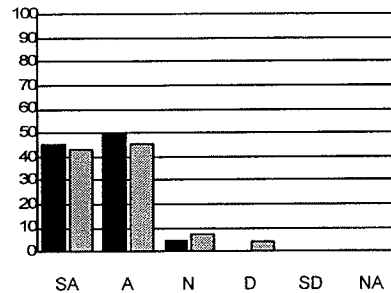
	SA	A	N	D	SD	NA
Number of respondents	5	5	13	0	0	22



**6. The workload in this course was reasonable and appropriate.**

Mean for this course: 4.4  
 Standard deviation: 0.58  
 Departmental mean: 4.3  
 Lowest mean for a course in this department: 3.0  
 Highest mean for a course in this department: 4.8

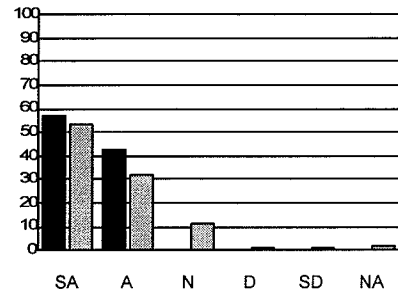
	SA	A	N	D	SD	NA
Number of respondents	20	22	2	0	0	0



**7. The instructor in this course showed a genuine concern for students.**

Mean for this course: 4.6  
 Standard deviation: 0.50  
 Departmental mean: 4.4  
 Lowest mean for a course in this department: 3.6  
 Highest mean for a course in this department: 4.8

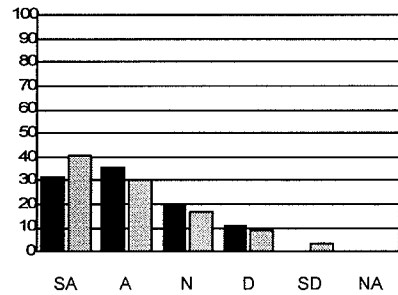
	SA	A	N	D	SD	NA
Number of respondents	25	19	0	0	0	0



**8. My interest in the subject has been stimulated by this course.**

Mean for this course: 3.9  
 Standard deviation: 0.98  
 Departmental mean: 4.0  
 Lowest mean for a course in this department: 2.9  
 Highest mean for a course in this department: 4.9

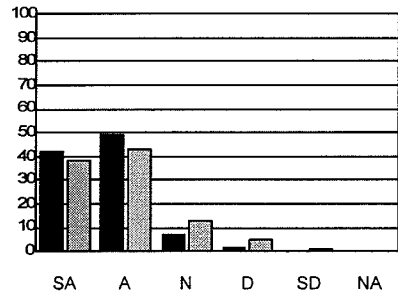
	SA	A	N	D	SD	NA
Number of respondents	14	16	9	5	0	0



**9. The course was well organized.**

Mean for this course: 4.3  
 Standard deviation: 0.69  
 Departmental mean: 4.1  
 Lowest mean for a course in this department: 2.7  
 Highest mean for a course in this department: 4.9

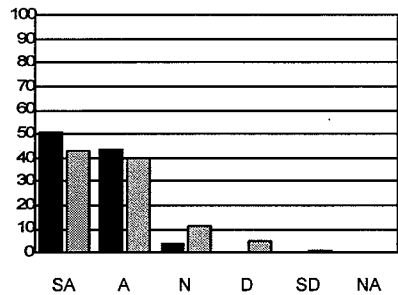
	SA	A	N	D	SD	NA
Number of respondents	19	22	3	1	0	0



**10. The instructor presented material clearly.**

Mean for this course: 4.5  
 Standard deviation: 0.58  
 Departmental mean: 4.2  
 Lowest mean for a course in this department: 3.1  
 Highest mean for a course in this department: 4.8

	SA	A	N	D	SD	NA
Number of respondents	23	20	2	0	0	0



**11. The instructor was available for discussion outside class.**

Mean for this course: 4.4  
 Standard deviation: 0.66  
 Departmental mean: 4.3  
 Lowest mean for a course in this department: 3.6  
 Highest mean for a course in this department: 4.9

	SA	A	N	D	SD	NA
Number of respondents	19	17	4	0	0	4

