

University Survey of Student Assessment of Teaching



Course Evaluation Report

INSTRUCTOR: **Jonathan W. Rose**

DEPARTMENT: **POLS**

COURSE: **POLS-110**

SECTION: **B**

YEAR: **2011**

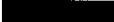
TERM: **FW**


Number of students in course or section: 359

Respondents for whom this is a required course: 44

Number of returned evaluations: 244

Percentage of enrolled students responding: 68%

LEGEND: Individual course results are reported thus: 

Departmental results are represented thus: 

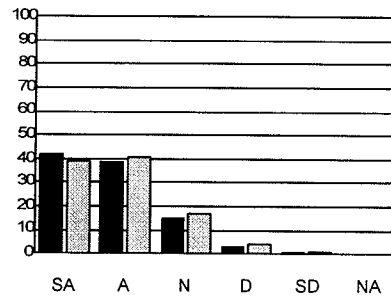
SA = Strongly Agree, A = Agree, N = Neutral, D = Disagree, SD = Strongly Disagree, NA = Not Applicable

- NOTES:
1. Departmental means and percentages have been calculated as the average of the individual course means and percentages (rather than from the individual responses for the department which would result in large classes unduly influencing the results).
 2. If the number of returns is less than 10, the responses are not aggregated into the departmental mean.
 3. The histogram bar represents the percentage of students rating each item.
 4. The numbers quoted are actual numbers of respondents.
 5. For response rates of less than 65% the results may not be representative of student opinion and should be interpreted with caution.
 6. The accuracy of the scanned data depends upon the legibility of the response marks. In some circumstances a small percentage of responses may be undetected by the scanner.

1. Overall, this is an excellent course.

Mean for this course: 4.2
 Standard deviation: 0.85
 Departmental mean: 4.2
 Lowest mean for a course in this department: 4.1
 Highest mean for a course in this department: 4.2

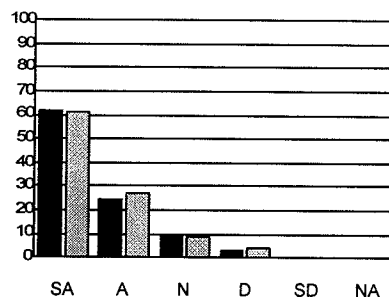
	SA	A	N	D	SD	NA
Number of respondents	101	95	36	7	2	0



2. Overall, this instructor is an effective teacher.

Mean for this course: 4.4
 Standard deviation: 0.83
 Departmental mean: 4.4
 Lowest mean for a course in this department: 4.4
 Highest mean for a course in this department: 4.4

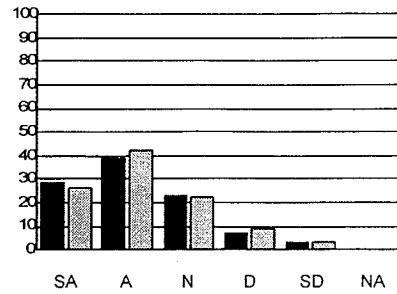
	SA	A	N	D	SD	NA
Number of respondents	147	60	23	8	1	0



3. I learned a great deal from this course.

Mean for this course: 3.9
 Standard deviation: 1.00
 Departmental mean: 3.8
 Lowest mean for a course in this department: 3.7
 Highest mean for a course in this department: 3.9

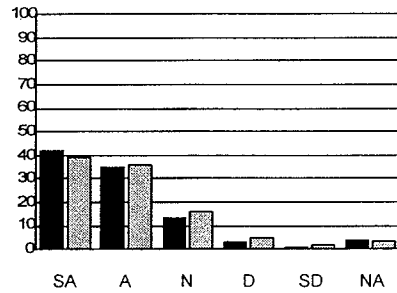
	SA	A	N	D	SD	NA
Number of respondents	70	93	55	16	6	0



4. The instructor showed sensitivity to the needs and interests of students from diverse groups.

Mean for this course: 4.2
 Standard deviation: 0.88
 Departmental mean: 4.1
 Lowest mean for a course in this department: 4.0
 Highest mean for a course in this department: 4.2

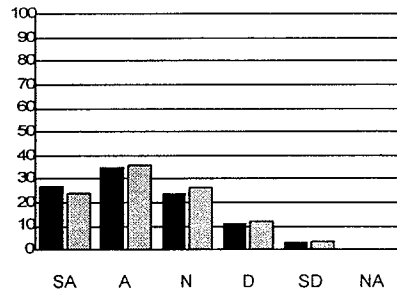
	SA	A	N	D	SD	NA
Number of respondents	101	84	33	8	2	10



5. Grading was a fair assessment of my performance in this course.

Mean for this course: 3.7
 Standard deviation: 1.06
 Departmental mean: 3.7
 Lowest mean for a course in this department: 3.6
 Highest mean for a course in this department: 3.7

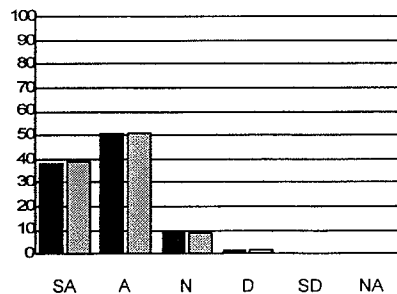
	SA	A	N	D	SD	NA
Number of respondents	63	83	56	25	7	0



6. The workload in this course was reasonable and appropriate.

Mean for this course: 4.3
 Standard deviation: 0.68
 Departmental mean: 4.3
 Lowest mean for a course in this department: 4.3
 Highest mean for a course in this department: 4.3

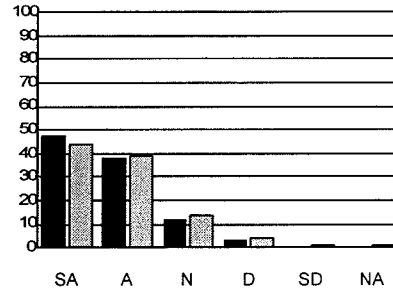
	SA	A	N	D	SD	NA
Number of respondents	93	124	21	4	0	0



7. The instructor in this course showed a genuine concern for students.

Mean for this course: 4.3
 Standard deviation: 0.78
 Departmental mean: 4.2
 Lowest mean for a course in this department: 4.1
 Highest mean for a course in this department: 4.3

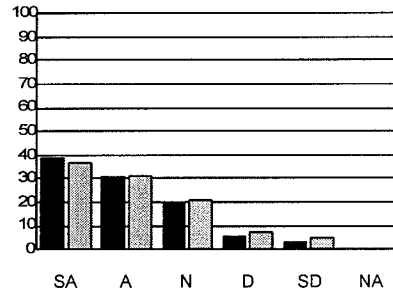
	SA	A	N	D	SD	NA
Number of respondents	113	89	28	6	0	0



8. My interest in the subject has been stimulated by this course.

Mean for this course: 4.0
 Standard deviation: 1.06
 Departmental mean: 3.9
 Lowest mean for a course in this department: 3.8
 Highest mean for a course in this department: 4.0

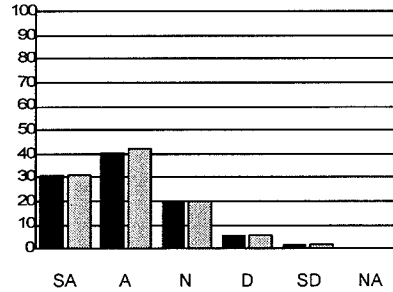
	SA	A	N	D	SD	NA
Number of respondents	94	75	48	14	8	0



9. The course was well organized.

Mean for this course: 3.9
 Standard deviation: 0.95
 Departmental mean: 4.0
 Lowest mean for a course in this department: 3.9
 Highest mean for a course in this department: 4.0

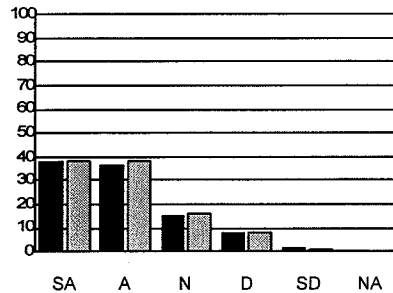
	SA	A	N	D	SD	NA
Number of respondents	73	98	47	15	4	1



10. The instructor presented material clearly.

Mean for this course: 4.0
 Standard deviation: 1.00
 Departmental mean: 4.1
 Lowest mean for a course in this department: 4.0
 Highest mean for a course in this department: 4.1

	SA	A	N	D	SD	NA
Number of respondents	92	89	36	19	4	0



11. The instructor was available for discussion outside class.

Mean for this course: 4.4
 Standard deviation: 0.73
 Departmental mean: 4.4
 Lowest mean for a course in this department: 4.3
 Highest mean for a course in this department: 4.4

	SA	A	N	D	SD	NA
Number of respondents	117	88	16	6	0	10

